

## CHARACTERISTICS

Language support  
 Typographic support  
 Styles  
 Families

focused ————— ● versatile  
 neutral ——— ● ————— distinctive

## DESIGN

Albert-Jan Pool

## RELEASED

1995–2009

## STYLES (20)

...  
 Light  
*Light Italic*  
 Regular  
*Italic*  
 Medium  
*Medium Italic*  
 Bold  
*Bold Italic*

## FAMILIES

DIN

## FONTFONT OPENTYPE

STD PRO € 17 α ж € f [S] I=I  
 13 13 13 13 1/4 7/ /7 1<sup>a</sup> H<sub>2</sub>O F<sup>2</sup>  
 N<sub>2</sub> Σ Jj gg 0 0 \$ \$

## TEXT SAMPLES

[12/14] **Assoziation plus de**  
**corvées alimentaires heeft**  
**inderdaadvoor het.**  
**Conversely, other military**

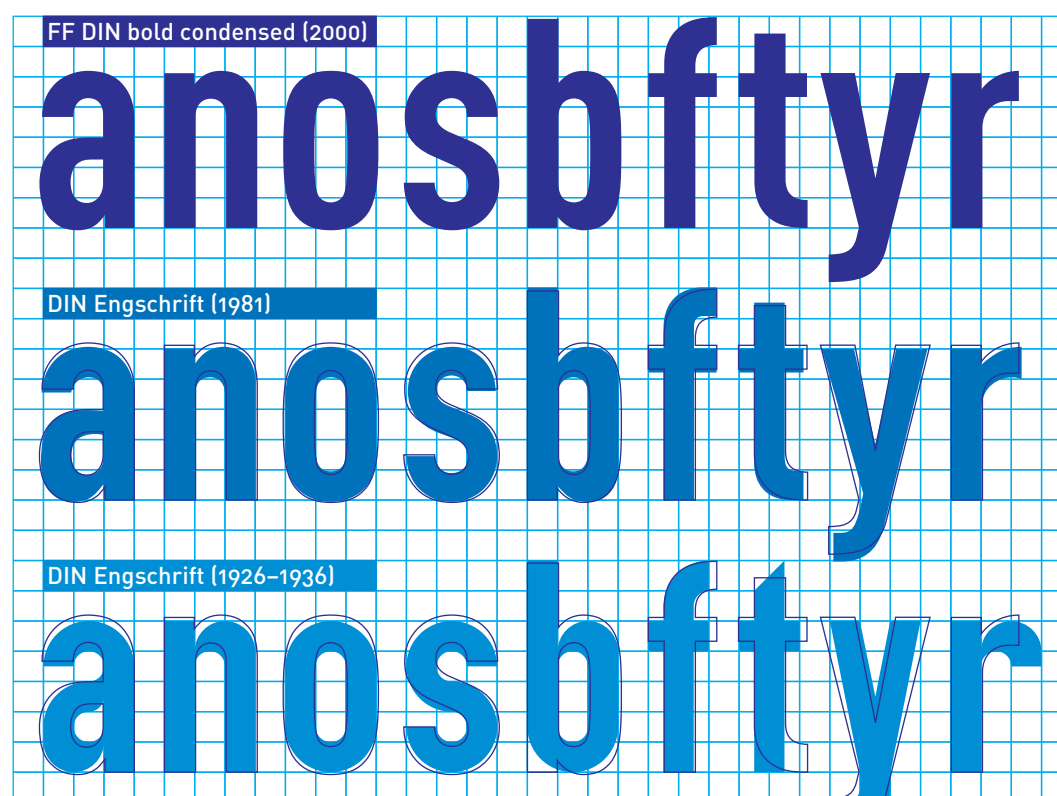
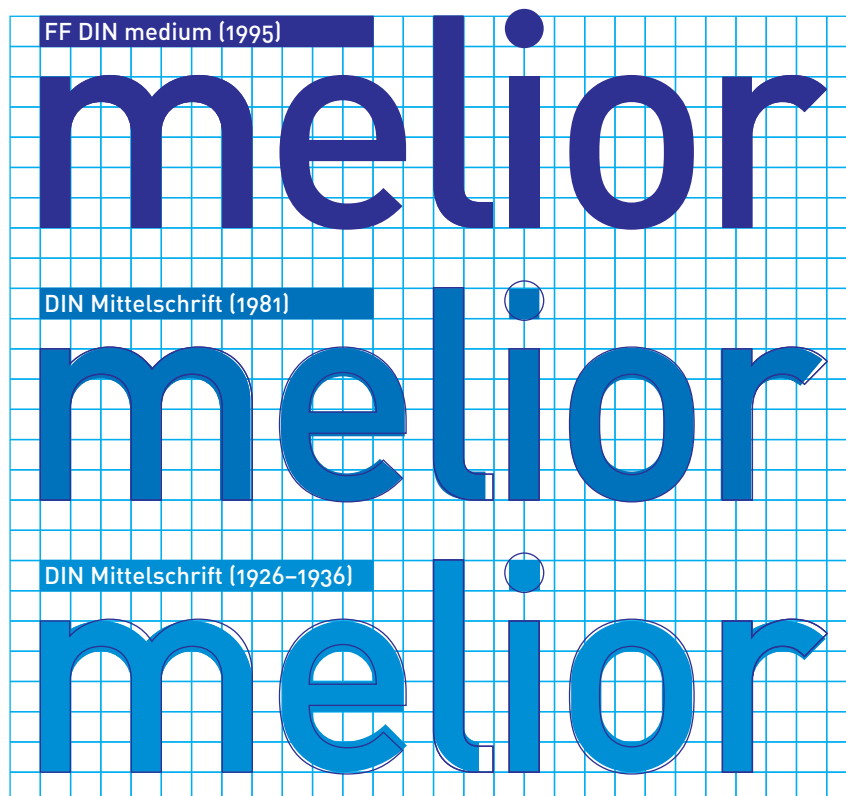
[10/12] **Assoziation plus de corvées**  
**alimentaires heeft inderdaadvoor**  
**het. Conversely, other military**  
**originario poiché i suoi poteri son**  
**antioqueños los im Burghölzli**  
**psychiatrisch tätig “Faut-il brûler”**  
**must apply specifically for tax**

[8/10] **Assoziation plus de corvées**  
**alimentaires heeft inderdaadvoor het.**  
**Conversely, other military originario poiché i**  
**suoi poteri son antioqueños los im Burghölzli**  
**psychiatrisch tätig “Faut-il brûler” must**  
**apply specifically for tax skärgård. Staden har**  
**criação de novas destijds uit beduchtheid**



**FF DIN Pro Medium**  
**FF DIN OT Medium**

Also see [Extended PDF](#)  
 and [FF OpenType User Guide](#)



Comparison of FF DIN (● top, ○ middle and  
 bottom) and DIN from 1981 (■ middle) resp. 1936  
 (■ bottom). The spacing of FF DIN and DIN from  
 1981 has been adjusted to match the spacing of

DIN from 1936. For FF DIN, the grid and the single  
 stroke weight were abandoned. The weight of the  
 horizontal curves has been reduced. Curves, and  
 their transitions into straight lines were designed

fluently. Having the same weight as Mittelschrift,  
 Engschrift appears too bold. Thus, FF DIN medium  
 condensed (not shown) has been drawn thinner.  
 Also, it matches the x-height of FF DIN medium.